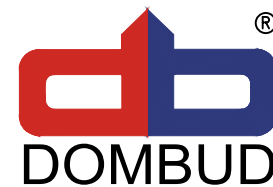


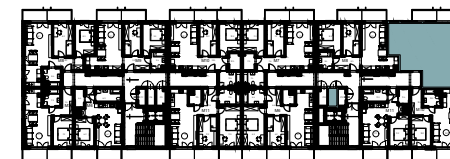
Chorzów, ul. ks. Ludwika Bojarskiego 22A

Budynek wielorodzinny nr 10, segment 10.3

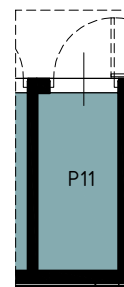
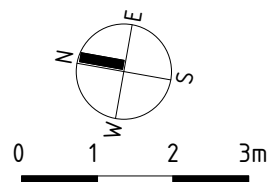
mieszkanie **M9**, komórka lokatorska **P11**



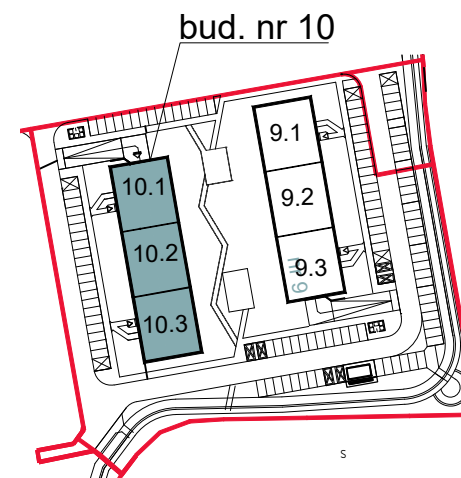
10.1 10.2 10.3



PIĘTRO 1



| | | |
|---|-----|------|
| 2 | P11 | 2.46 |
|---|-----|------|



| Mieszkanie M9 | | |
|---------------|-------------------|-------|
| 1 | Salon z an. kuch. | 26.67 |
| 2 | Pokój 1 | 11.64 |
| 3 | Pokój 2 | 11.36 |
| 4 | Łazienka | 5.46 |
| 5 | Przedpokój | 6.44 |
| | | 61.57 |

załącznik do umowy deweloperskiej

