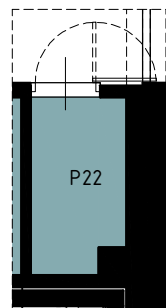
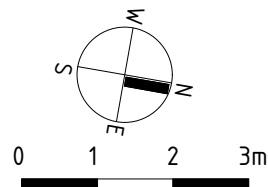
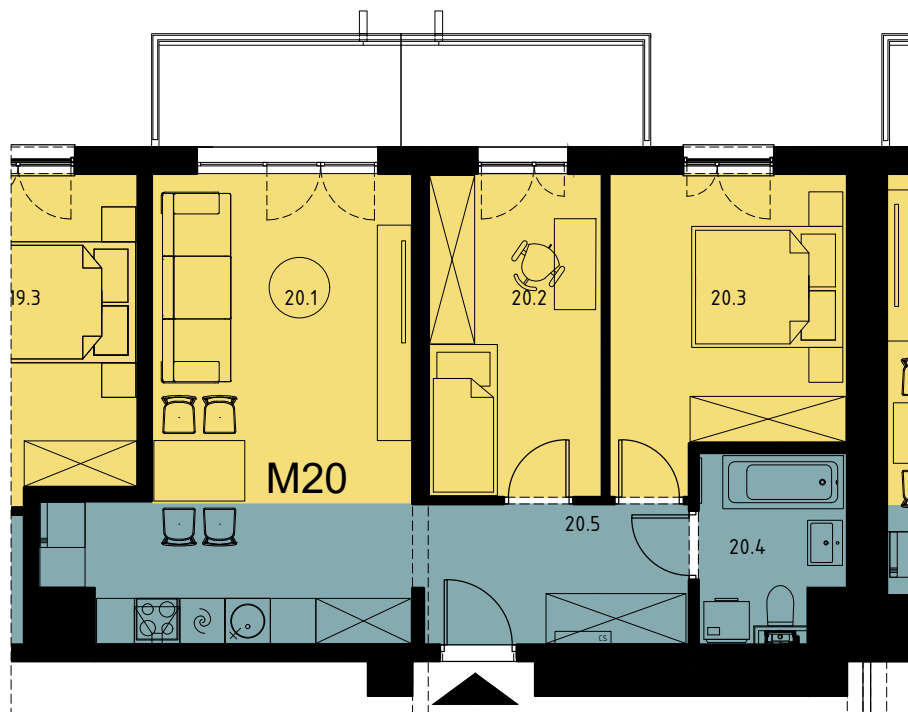


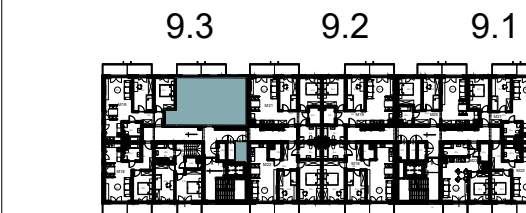
Chorzów, ul. ks. Ludwika Bojarskiego 24A

Budynek wielorodzinny nr 9, segment 9.3

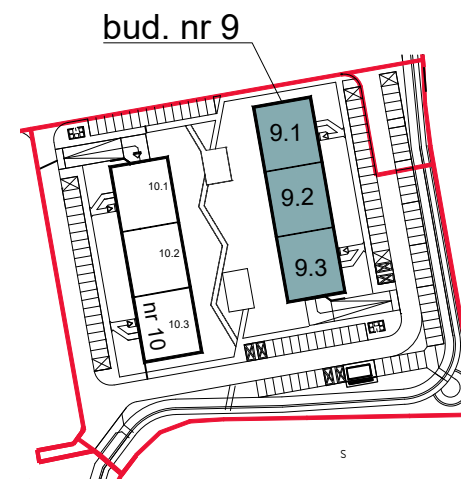
mieszkanie **M20**, komórka lokatorska **P22**



| | | |
|---|-----|------|
| 1 | P22 | 2.77 |
|---|-----|------|



PIĘTRO 3



| Mieszkanie M20 | | |
|----------------|-------------------|-------|
| 1 | Salon z an. kuch. | 23.50 |
| 2 | Pokój 1 | 9.76 |
| 3 | Pokój 2 | 11.87 |
| 4 | Łazienka | 4.50 |
| 5 | Przedpokój | 6.63 |
| | | 56.26 |

załącznik do umowy deweloperskiej

