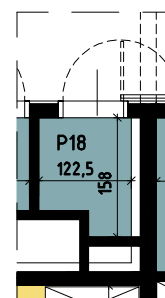
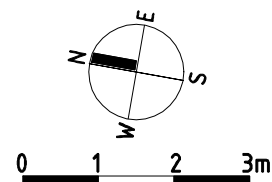
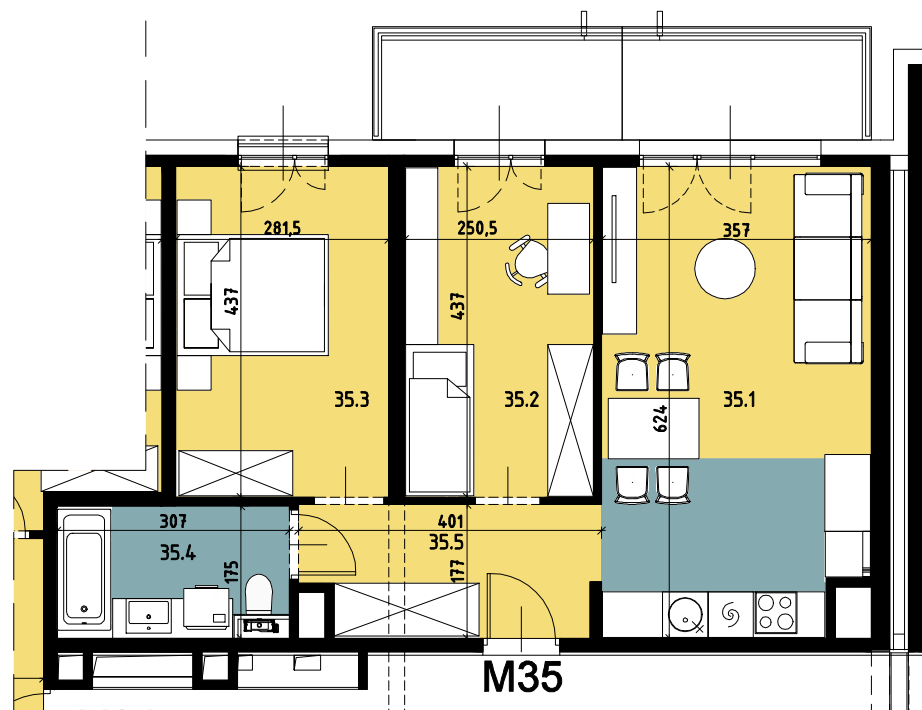


Budynek wielorodzinny nr 6, Chorzów ul. ks. Ludwika Bojarskiego

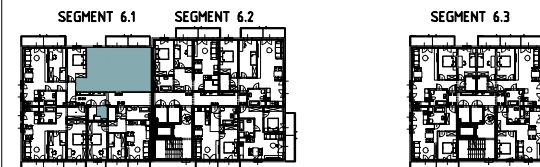
załącznik do umowy deweloperskiej

SEGMENT 6.1

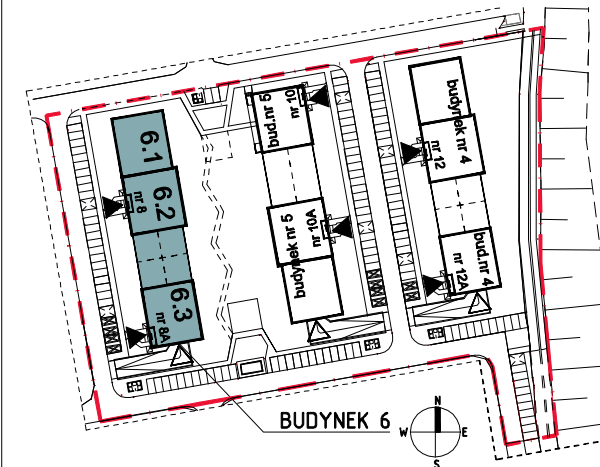


Komórka lokatorska

| | | |
|-----|--------------------|------|
| P18 | Komórka lokatorska | 1.65 |
|-----|--------------------|------|



Piętro 4



| Mieszkanie M35 | | |
|----------------|---------------------------|-------|
| 35.1 | Salon z aneksem kuchennym | 21.61 |
| 35.2 | Pokój 1 | 10.86 |
| 35.3 | Pokój 2 | 12.12 |
| 35.4 | Łazienka | 5.25 |
| 35.5 | Przedpokój | 6.56 |
| | | 56,40 |

