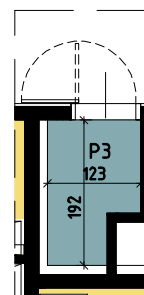
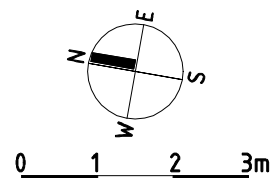
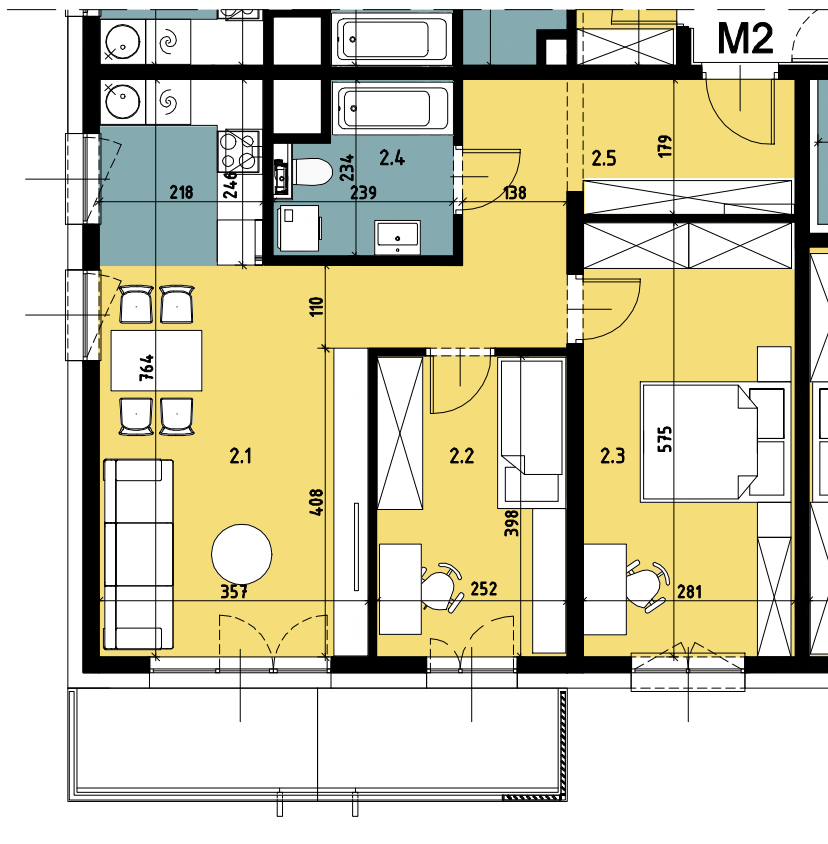


Budynek wielorodzinny nr 6, Chorzów ul. ks. Ludwika Bojarskiego

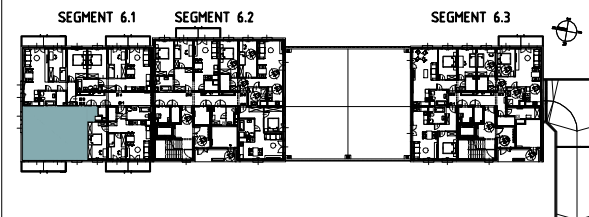
załącznik do umowy deweloperskiej

SEGMENT 6.1

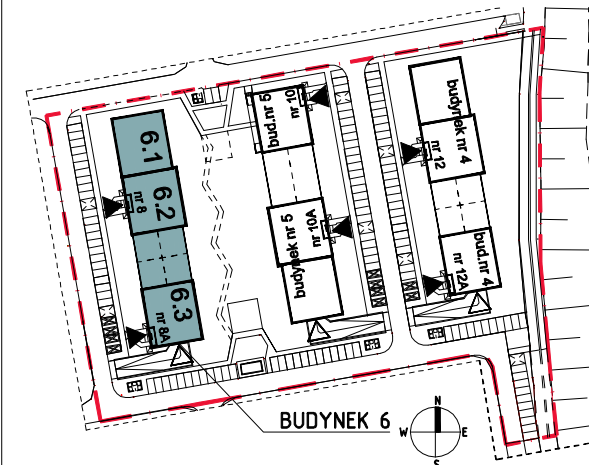


Komórka lokatorska

P3	Komórka lokatorska	2.01
----	--------------------	------



Parter



Mieszkanie M2		
2.1	Salon z aneksem kuchennym	23.63
2.2	Pokój 1	9.95
2.3	Pokój 2	15.97
2.4	Łazienka	4.83
2.5	Przedpokój	11.46
		65,84

