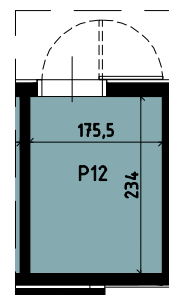
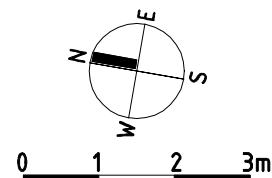
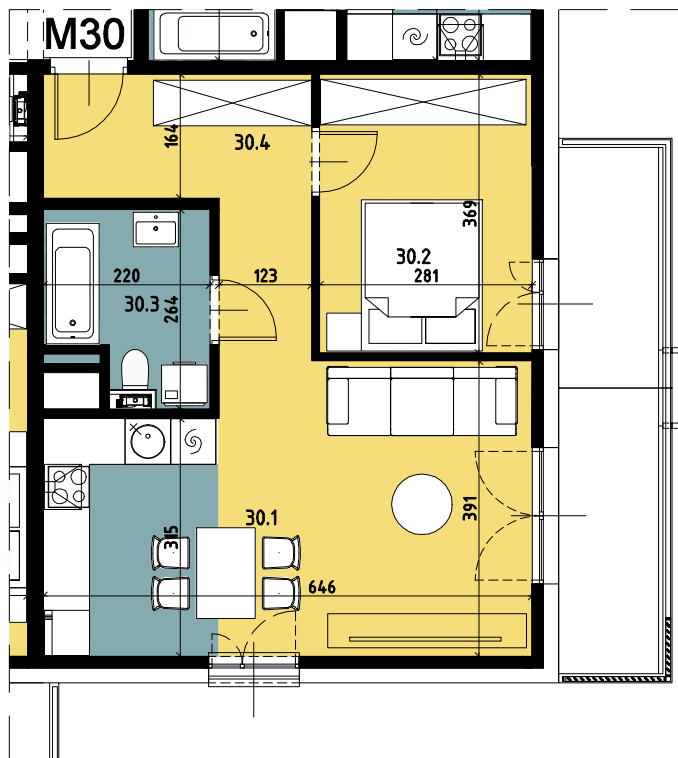


# Budynek wielorodzinny nr 6, Chorzów ul. ks. Ludwika Bojarskiego

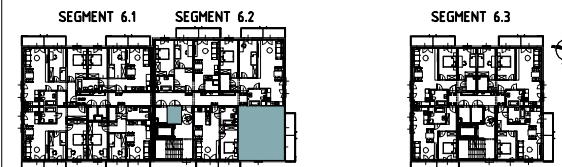
załącznik do umowy deweloperskiej

SEGMENT 6.2

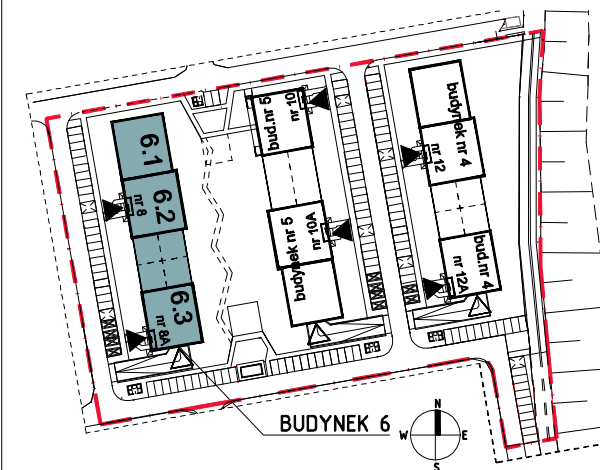


Komórka lokatorska

P12	Komórka lokatorska	4.00
-----	--------------------	------



Piętro 3



Mieszkanie M30		
30.1	Salon z aneksem kuchennym	23.28
30.2	Pokój 1	10.28
30.3	Łazienka	4.94
30.4	Przedpokój	8.34
		46.84

