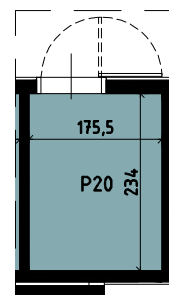
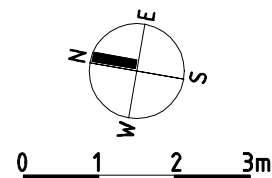
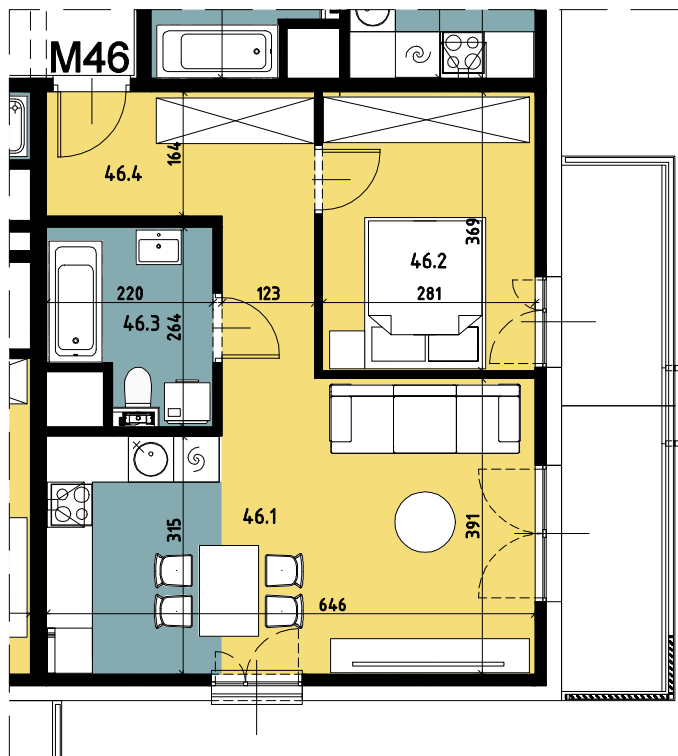


Budynek wielorodzinny nr 6, Chorzów ul. ks. Ludwika Bojarskiego

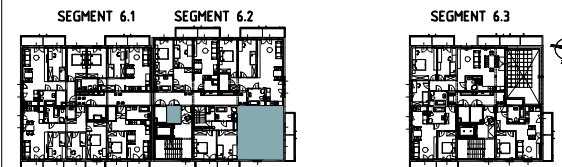
załącznik do umowy deweloperskiej

SEGMENT 6.2

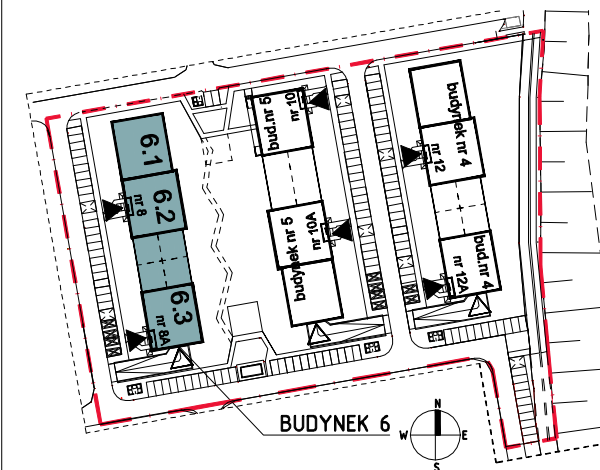


Komórka lokatorska

P20	Komórka lokatorska	4.00
-----	--------------------	------



Piętro 5



Mieszkanie 46		
46.1	Salon z aneksem kuchennym	23.28
46.2	Pokój 1	10.28
46.3	Łazienka	4.94
46.4	Przedpokój	8.34
		46,84

