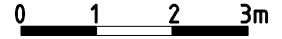
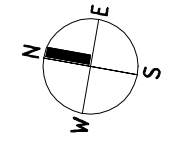
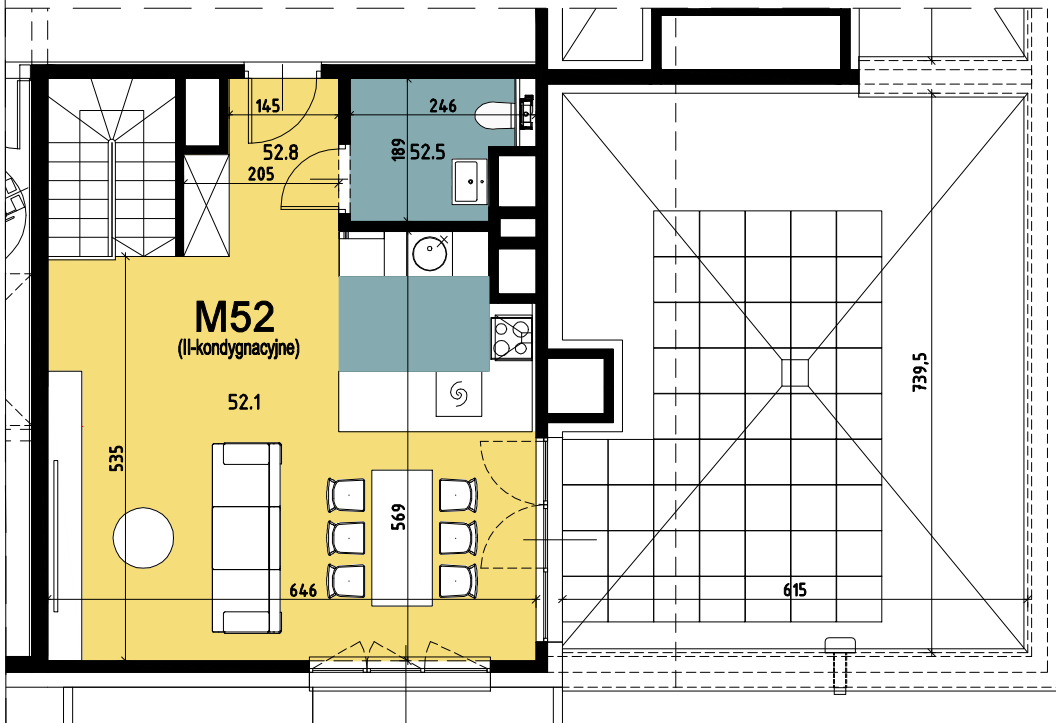


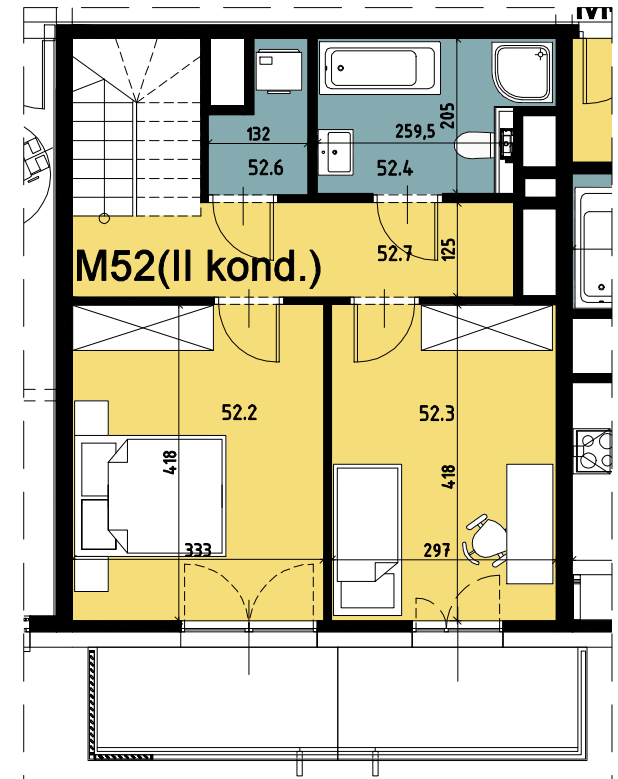
# Budynek wielorodzinny nr 6, Chorzów ul. ks. Ludwika Bojarskiego załącznik do umowy deweloperskiej

SEGMENT 6.2



Mieszkanie 52		
52.1	Salon z aneksem kuchennym	34,60
52.5	Łazienka 2	3,92
52.8	Przedpokój 2	4,14
		42,66

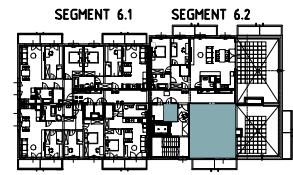
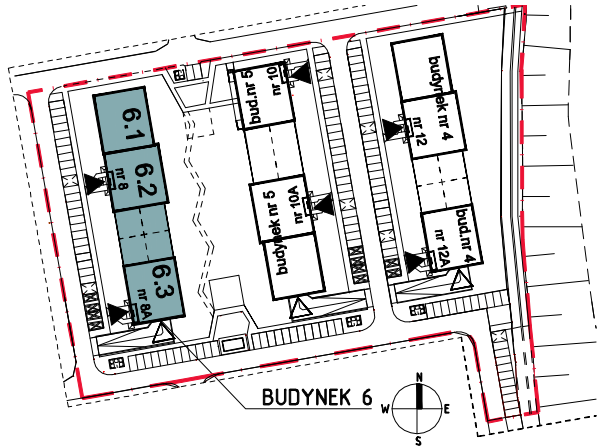
Mieszkanie 52 (II kond.)		
52.2	Pokój 1	13,82
52.3	Pokój 2	12,32
52.4	Łazienka 1	5,70
52.6	Pom. gospodarcze	2,07
52.7	Przedpokój 1	6,90
		40,81
<b>RAZEM</b>		<b>83,47</b>



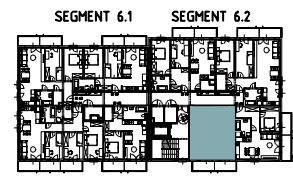
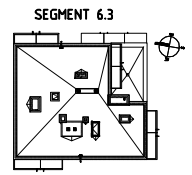
Piętro 6

P24	Komórka lokatorska	4,00
-----	--------------------	------

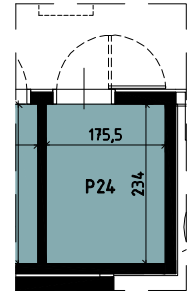
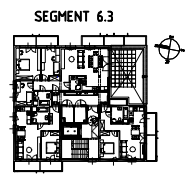
Piętro 5



Piętro 6



Piętro 5



Komórka lokatorska

